

# Mimi's Dining Room



## PRIVACY POLICY



## EASTERN & ORIENTAL HOTEL @ PENANG

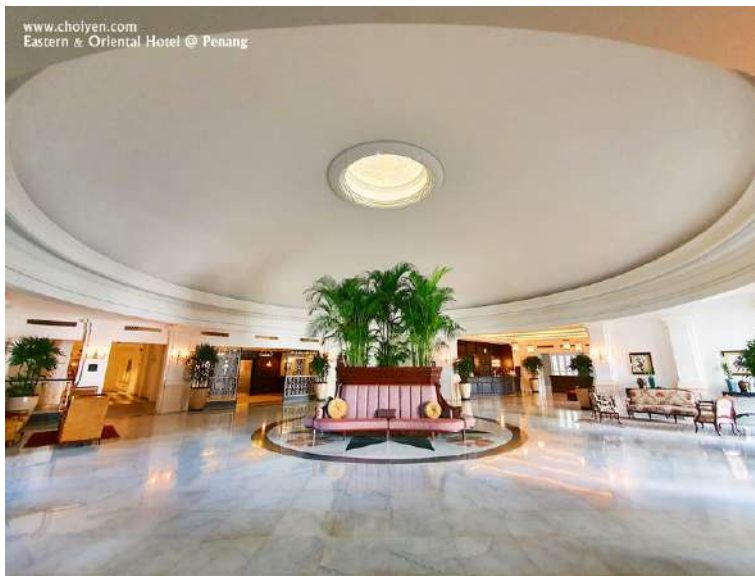
[March 19, 2020](#) | [Choi Yen](#) | [10 comments](#)

Like 23

**The epitome of a grand dame hotel, Eastern & Oriental Hotel now boasts new designed suites and dining venues – all while preserving its unique historic charm.**

**After months of extensive restoration, The Eastern & Oriental Hotel (E&O Hotel) has re-opened its Heritage Wing on December last year. We took this opportunity to travel to Penang and stayed at the newly refurbished Heritage Wing a couple of months ago.**

**Established by the Sarkies brothers in 1885, E&O Hotel's restoration write a new chapter and breathing new life into the storied hotel while retains what makes the hotel a treasure – the ambience, the service, the charm and the heritage of the hotel.**



**Walk through the revolving door, we were greeted by the hotel's iconic Echo Dome which virtually broadcasts sound to the entire lobby.**





**Like an entryway, hotel's lobby is where you make a first impression. E&O Hotel's lobby is a lovely combination between grandeur and approachable charm. The creamy white lobby is spacious and filled with lots of natural light. Marble floor, plush coaches, elegant rugs, ambient chandeliers, oil paintings and huge potted plants all set the stage.**





**The Waygood-Otis Lift at the lobby was one of the country's earliest passenger lift. This manually controlled although still in mint condition, but it's no longer in use.**



**Staircase to grandeur.**



The passageway.



**Over its 134-year history, the E&O Hotel has played host to the world's famous celebrated artists, writers and heads of state. Charlie Chaplin, Sun Yat Sen, Tunku Abdul Rahman and Rudyard Kipling were just some of the illustrious names that spent a night or two under its roof.**



One of the rest areas on the guest-room floor.

The revitalized E&O Hotel offers 99 enhanced luxurious all-suite accommodations, across eight distinct suite categories, from the 57 square metres Superior Suite to the sprawling 522 square metres E&O Suite, the latter with a private study, lounge, walk-in dressing room with “His” and “Her” gilt bathroom complete with spa bath and television. Equipped with a separate formal lounge linked to a private dining rooms for up to 22 people, bar and butler’s kitchenette with separate male and female restrooms.



Our butler checked us in and shows me the features of our 58 square metres Deluxe Suite. The inspiring high ceilings definitely create a sense of openness and space. The suite is luxuriously appointed with bedroom, bathroom and separate living area. The bedroom area



**adopted a classy white theme features hardwood floor, dark wooden furniture and further accentuated by the elegant chandelier.**





**The extremely plush king-size bed with crisp white sheets, cozy duvet and down pillows is flanked by bedside tables and lamps.**





**Guests of the newly relaunched Heritage Wing's suite can enjoy the elevated 24 hour butler service, from in-suite check-in, laundry/pressing service (three pieces per stay), to skillfully unpacking and packing service, no task is too small for a E&O butler.**





**The opposite wall features a large television, wardrobe as well as a work desk. Hair dryer, umbrella, safe box, weighing scale and even sarongs are provided. WIFI was fast and there are efficient of power sockets and USB ports for devices charging.**





The small living room is cozy and classical appeal, furnished with a plush sofa, armchairs, coffee table and plenty of soft furnishings. Framed leaf specimen, Persian carpet, ambient wall and standing lamps all added to the sumptuous surroundings.









**There is wall-mounted LCD television at the living area and the minibar is “hidden” in the dark wooden cabinet. Capsule coffee machine, electric kettle and glassware are provided too. The complimentary minibar was well stocked with soft drinks, sparkling water, juices, beers and sodas. A selection of snacks, assorted tea leaves and minibar are replenished daily.**



**How about decanters with a selection of liquors which will be refilled daily?**









**The bathroom is a superbly equipped marble-lined affair with deep soaking tub take the centre stage. The floor is tiled with E&O's iconic black and white chequered tile, the dual vanities set on the both side of the bathroom with comprehensive amenities as well as modern plumbing with hot and cold water. There is also a separate walk in shower and toilet cubicle. Comfortable robes and slippers are there to slip on after a shower.**

**Oh ya, I love the scent of the PAÑPURI Thai Jasmine & Mint organic spa products that provided during my stay.**



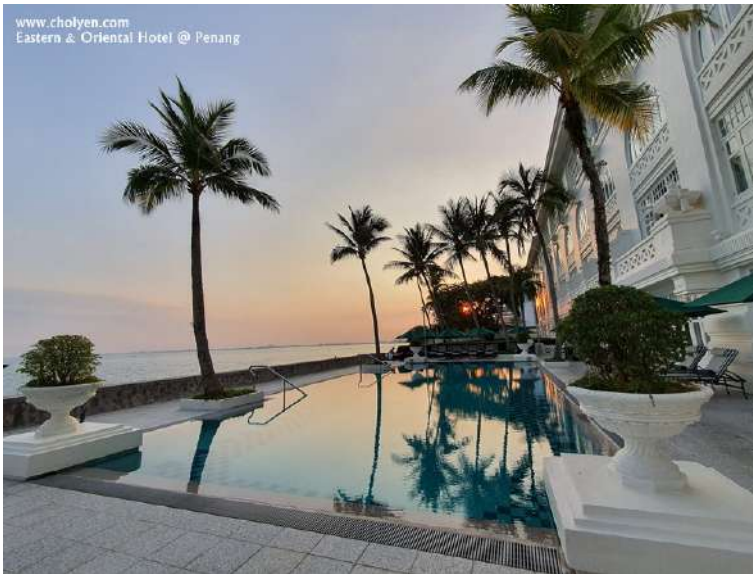




**For the environmentally-friendly practice, the bath towels and bed sheet are changed upon request.**



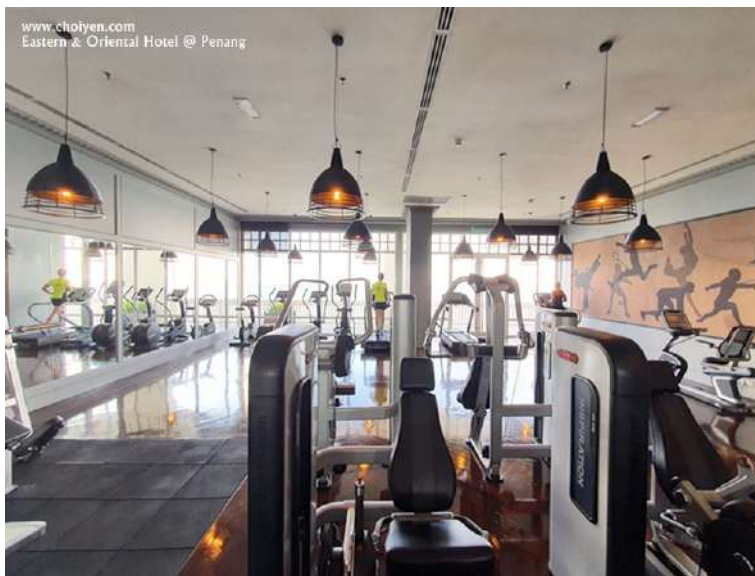
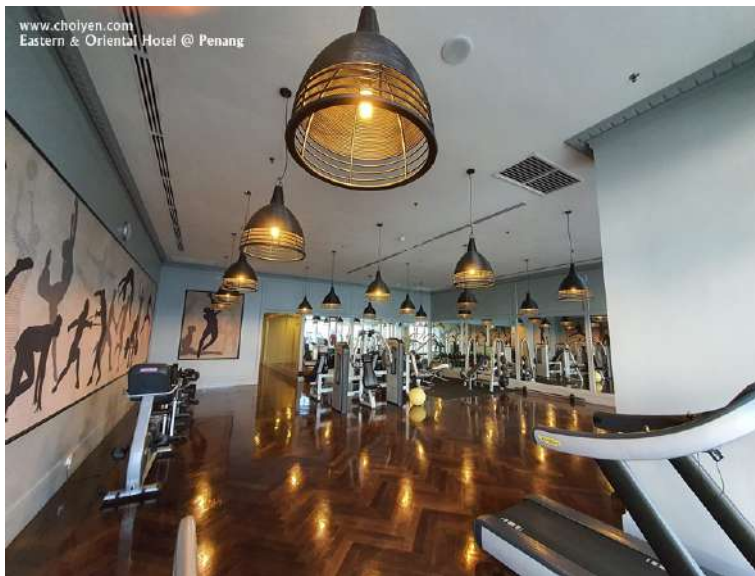
**The seaview from our window.**



**The gorgeous swimming pool with breathtaking unobstructed view of The Andaman Sea. Guests staying at Heritage Wing have exclusive use of the pool.**

**7.00am – 8.00pm**





**Fitness centre located on the 6th floor of Victory Annexe is equipped with an extensive range of equipment and overlooking the sea.**

**Fitness Centre: 7.00am – 10.00pm**







**Photos of the absolutely stunning view of the seafront which I took in the morning when I was on the way to the fitness centre for workout.**



**Standing majestically on the lawn between the Heritage Wing and Victory Annexe, the E&O beloved Java Tree was planted long before the hotel was built and it is the oldest and largest of it's kind in Penang.**

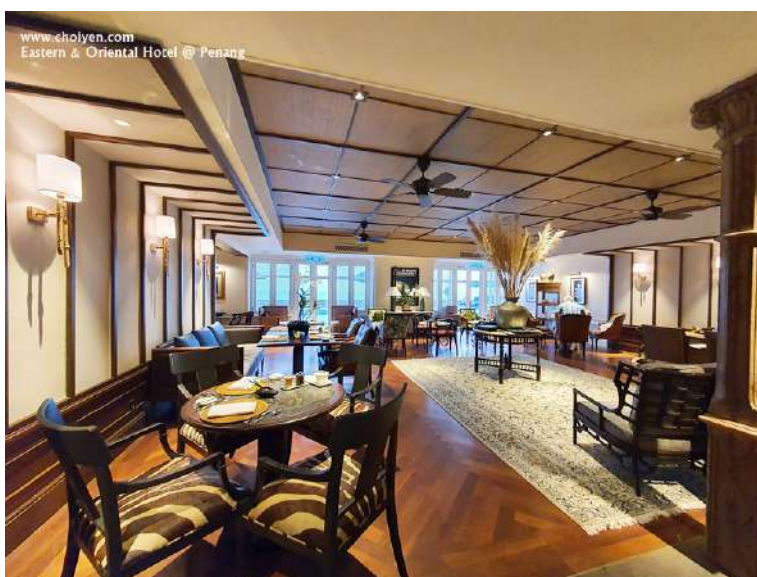
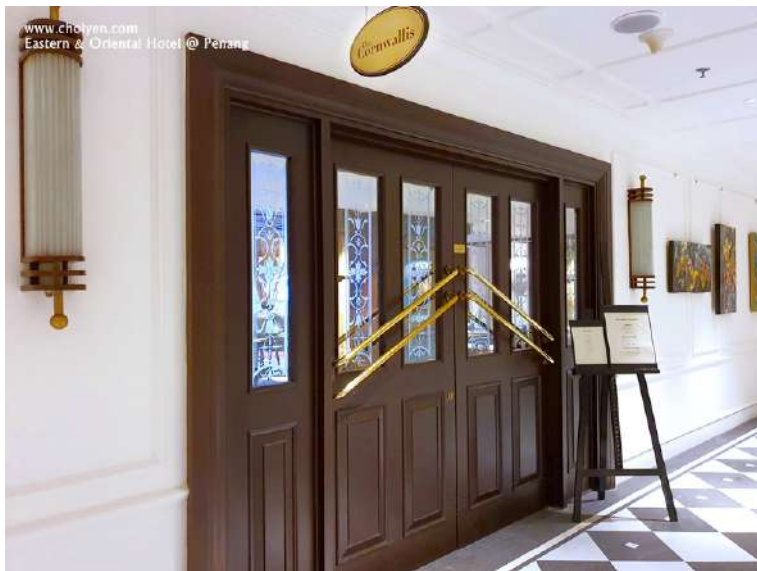


**One of the cannons from Fort Cornwallis as part of the hotel's landscape and there are total three of them. We had a stroll at the garden with 274.9m seafront (which is the longest of any hotel in the world), immersed ourselves in the immaculately manicured lawn with tropical flower beds, frangipanis and palm trees.**



**Me posing at the new art colonnade situated along the hallway outside The Cornwallis.**

**With the reopening, hallmark experiences will be presented while new distinctive ones are being refined including some F&B outlets.**

























**Taking over the space that used to be Farquhar Bar is the Cornwallis, a private lounge exclusively for guests of the Heritage Wing and Corner Suites of Victory Annexe. Furnished in library style decor, it has an old world charm and a sense of tranquility echoed throughout the space. Here, guests can enjoy continental breakfast from 7am to 10.30am while cocktails and canepes are served from 6pm to 8pm.**



**Verdict: It's another satisfying and perfect hotel staying experience at [E&O Hotel](#). This time, we were truly pampered by the butler service, as well as the hotel's elevated facilities and room. E&O Hotel unquestionably a magical place in Penang with a combination of gracious luxury and expansive tropical colonial design that stirs your historical and travel imagination. Stay tune to my next posts which I'm going to share my dining experiences at the hotel's new F& outlets.**



### Eastern & Oriental Hotel

**10, Lebuhr Farquhar, George Town, 10200 George Town, Pulau Pinang.**

**Tel: +604-222 2000**

**Website: <http://www.eohotels.com>**

**Facebook: <https://www.facebook.com/eohotels/>**

Like 23

Hotel Review   Lifestyle   Other State   Outing  
Penang   Travel

## 10 COMMENTS

**PH**   March 19, 2020 9:54 am

How lovely! But gotta wait until the restriction of movement is over before can consider heh..heh.. Looking